

MS-3350
2014.67.4

Artist: Anthony Beale

Title: The St. Helena Collection, 1826 and the India Collection, 1858

Medium: album containing lithographs, drawings, watercolours and one photograph

Dimensions: 65.0 x 48.6 x 4.7 cm



MS-3350
2014.67.4

Artist: Anthony Beale

Title: The St. Helena Collection, 1826 and the India Collection, 1858

Medium: album containing lithographs, drawings, watercolours and one photograph

Dimensions: 65.0 x 48.6 x 4.7 cm

ANTHONY BEALE

The St. Helena Collection 1826
The India Collection 1858

Property of Don Quast, "Hollands".



- 12700/12703
1. Pl. 1. The Interior of St. Helena. (where Napoleon lived after his arrival being the present inn of the house at Longwood.)
 2. Pl. 2. The Old House at Longwood. St. Helena (in which Napoleon lived and died.)
 1. Pl. 3. The Interior of the room at St. Helena. (in which Napoleon died.)
 2. Pl. 4. The New House at Longwood, St. Helena (built for Napoleon)
 1. Pl. 6. Plantation House, St. Helena. The Residence of the Governor.
 2. Government House (etc.) James Town.
 1. James Town, St. Helena, 1826. (Sketch)
 2. James Town, St. Helena. From a drawing by Major F.S. Stodd.

- 1
CONTENTS as of Dec. 1860. - 238 - 239
1. The two tanks opposite Armoir (sp.) lat March '58 (1858).
 2. Church at Malleswar, India where Cronin (sp.) was married. May, 1850. Dushy Presidency.
 1. The Bastion at Lucknow. Oct. '59.
 2. Lucknow. The Artillery.
 3. Farapat (sp.)
 1. Bridge at Lucknow. Oct. '59.
 2. The Artillery.
 1. Chaudhwan Yaggar (sp.) / 59.
 2. Delhi from the Ridge.
 1. Unmarked
 2. Unmarked
 3. Dussakore (sp.)
 1. Nagpore Tank (sp.)
 2. Delhi
 3. Nagpore
 4. The Deer's Feet, Delhi.
 1. Delhi Desert, Lucknow.
 1. Calcutta.
 2. Lucknow.
 1. Calcutta. $\frac{2106}{62}$
 1. Nagpore.
 1. Looking place on the Doudley. (3 sketches in water colour on back - unfinished.)
 2. Close to fort of Hill Fort Dewasanyuk (sp.) near Barron 22 miles from Park of Krishna. (sp.) 6295.

- 2
CONTENTS as of Dec. 1860.
1. Part of Allahabad from my house at Allahabad Fort.
 2. Crossing the Snow at Dehra. (sp.)
 1. Derris de Talan. Nagpore (sp.)
 2. Unmarked.
 1. Unmarked.
 1. Nagpore.
 2. Nagpore.
 1. Nagpore. The main street of camp.
 1. Crossing the Snow.
 1. Nagpore
 2. Nagpore (sp.)
 1. Well at Comptee, by the Scale in 1861. (reverse-pencil sketch) Nov. 3rd/61.
 2. Barron.
 1. Datta Baneria.
 2. Unmarked.
 3. Unmarked.
 4. Fisherman-India. E.
 1. Unmarked.
 2. Datta.
 1. Girid.
 2. Derradourah at Bortogore.
 1. Unmarked.
 2. Unmarked.
 3. Klemm Tuttle (sp.)

- 3
CONTENTS as of Dec. 1860.
1. Derris de Talan (sp.)
 2. By the James Free Travellers' House (sp.)
 1. Derris (sp.)
 1. Derris, Lahore.
 2. Derris de Talan.
 3. Derris (sp.)
 1. Taj Mahal, very bad. (sp.)
 2. Part of Agri.
 1. Old view of Datta.
 2. The Derris' house, Datta.
 1. Derris with the Jalim from outline by W. Hagen.
 2. Derris from Nagpore (sp.)
 1. at Derris (sp.)
 2. Old Nagpore at Derris (sp.)
 1. Derris.
 2. Derris.
 1. From the Fort at Derris.
 2. Tank of Derris (sp.) Nagpore.
 1. Derris (sp.) (also sp. Derris) May 1860/60.
 2. Towards the plain from Derris (sp.). Derris (sp.) looking towards the plain. $\frac{2111}{1111}$
 1. Derris. $\frac{2111}{1111}$ (Derris)
 2. Derris.
 1. Unmarked. 6295.
 2. From Derris (sp.) Tow Derris Derris. (sp.) 6295.

- 4
CONTENTS as of Dec. 1860.
1. Derris, Derris.
 2. Derris (sp.) Derris.
 1. Derris.
 1. Derris, Peak 15,000 Ft.
 1. on the Derris. 2. Derris (sp.). 3. Derris. 4. Derris (sp.) 5. Derris (sp.)
 6. Derris (sp.)
 1. Unmarked. 2. Derris. 3. Derris. 4. Derris (sp.) 5. Derris (sp.) 6. Derris (sp.)
 7. Derris (sp.)
 1. Photo of Derris - unmarked.



MS-3350
2014.67.4

Artist: Anthony Beale

Title: The St. Helena Collection, 1826 and the India Collection, 1858

Medium: album containing lithographs, drawings, watercolours and one photograph

Dimensions: 65.0 x 48.6 x 4.7 cm



THE TOWN OF ST. HELENA.

THE TOWN OF ST. HELENA.



THE TOWN OF ST. HELENA.

THE TOWN OF ST. HELENA.

MS-3350
2014.67.4

Artist: Anthony Beale
Title: The St. Helena Collection, 1826 and the India Collection, 1858
Medium: album containing lithographs, drawings, watercolours and one photograph
Dimensions: 65.0 x 48.6 x 4.7 cm



THE INTERIOR OF THE MILL AT ST. HELENA
IN 1826. (LITHOGRAPH BY ANTHONY BEALE)



THE NEW HOUSE AT ST. HELENA IN 1858
(LITHOGRAPH BY ANTHONY BEALE)



MS-3350
2014.67.4

Artist: Anthony Beale

Title: The St. Helena Collection, 1826 and the India Collection, 1858

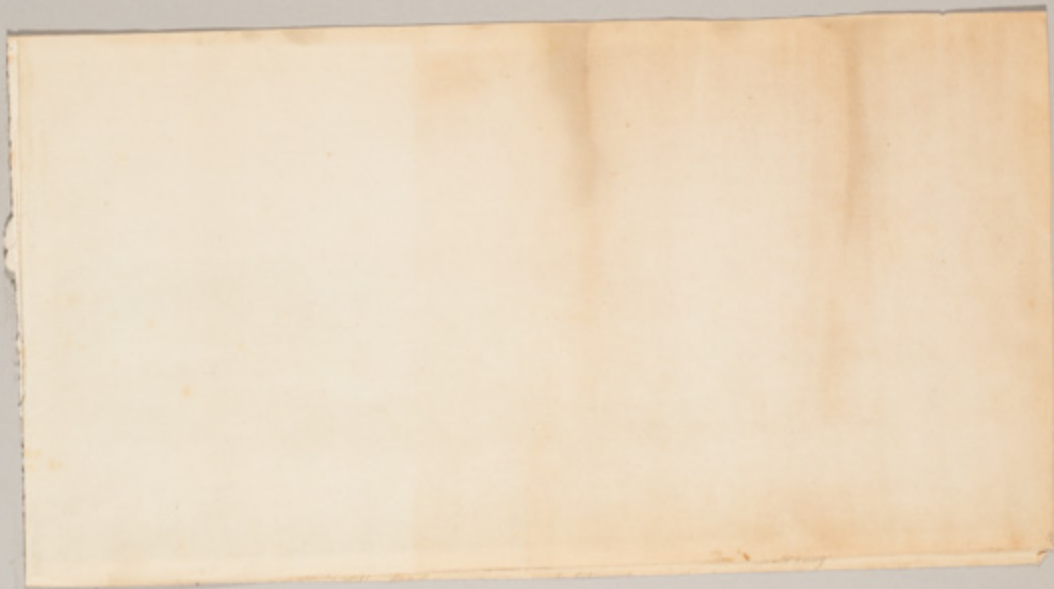
Medium: album containing lithographs, drawings, watercolours and one photograph

Dimensions: 65.0 x 48.6 x 4.7 cm



VIEW OF THE
THE RESIDENCE OF THE GOVERNOR

VIEW OF THE
THE RESIDENCE OF THE GOVERNOR





MS. 3050
2014.67.4
Artist: Anthony Beech
Title: India Collection, 1858 and the India Collection, 1858
Media: albumen containing lithographs, drawings, watercolours and one photograph
Dimensions: 05.8 x 48.8 x 4.7 cm



MS-3350
2014.67.4

Artist: Anthony Beale
Title: The St. Helena Collection, 1826 and the India Collection, 1858
Medium: album containing lithographs, drawings, watercolours and one photograph
Dimensions: 65.0 x 48.6 x 4.7 cm



*James Town, St. Helena
1828*



JAMES TOWN, ST. HELENA.
FROM A DRAWING BY G. S. S. S. S.



MS-3350
2014.67.4

Artist: Anthony Beale
Title: The St. Helena Collection, 1826 and the India Collection, 1858
Medium: album containing lithographs, drawings, watercolours and one photograph
Dimensions: 65.0 x 48.6 x 4.7 cm



The two tombs opposite the house
1st March 58



Church at Malabarwar, India
where Dracutt was married
May 1858
Bombay Presidency.

MS-3350
2014.67.4

Artist: Anthony Beale
Title: The St. Helena Collection, 1826 and the India Collection, 1858
Medium: album containing lithographs, drawings, watercolours and one photograph
Dimensions: 65.0 x 48.6 x 4.7 cm



MS-3350
2014.67.4

Artist: Anthony Beale
Title: The St. Helena Collection, 1826 and the India Collection, 1858
Medium: album containing lithographs, drawings, watercolours and one photograph
Dimensions: 65.0 x 48.6 x 4.7 cm



MS-3350
2014.67.4

Artist: Anthony Beale
Title: The St. Helena Collection, 1826 and the India Collection, 1858
Medium: album containing lithographs, drawings, watercolours and one photograph
Dimensions: 65.0 x 48.6 x 4.7 cm



Ghazipur from the Bridge

Ghazipur from the Bridge

19



Ghazipur from the Bridge

MS-3350
2014.67.4

Artist: Anthony Beale

Title: The St. Helena Collection, 1826 and the India Collection, 1858

Medium: album containing lithographs, drawings, watercolours and one photograph

Dimensions: 65.0 x 48.6 x 4.7 cm



Shivajee



MS-3350
2014.67.4

Artist: Anthony Beale
Title: The St. Helena Collection, 1826 and the India Collection, 1858
Medium: album containing lithographs, drawings, watercolours and one photograph
Dimensions: 65.0 x 48.6 x 4.7 cm



MS-3350
2014.67.4

Artist: Anthony Beale
Title: The St. Helena Collection, 1826 and the India Collection, 1858
Medium: album containing lithographs, drawings, watercolours and one photograph
Dimensions: 65.0 x 48.6 x 4.7 cm



*St. Helena
1826*



MS-3350
2014.67.4

Artist: Anthony Beale
Title: The St. Helena Collection, 1826 and the India Collection, 1858
Medium: album containing lithographs, drawings, watercolours and one photograph
Dimensions: 65.0 x 48.6 x 4.7 cm



Calcutta



Calcutta

MS-3350
2014.67.4

Artist: Anthony Beale
Title: The St. Helena Collection, 1826 and the India Collection, 1858
Medium: album containing lithographs, drawings, watercolours and one photograph
Dimensions: 65.0 x 48.6 x 4.7 cm



1124
86

Calcutta



MS-3350
2014.67.4

Artist: Anthony Beale
Title: The St. Helena Collection, 1826 and the India Collection, 1858
Medium: album containing lithographs, drawings, watercolours and one photograph
Dimensions: 65.0 x 48.6 x 4.7 cm



Port Jackson



MS-3350
2014.67.4

Artist: Anthony Beale
Title: The St. Helena Collection, 1826 and the India Collection, 1858
Medium: album containing lithographs, drawings, watercolours and one photograph
Dimensions: 65.0 x 48.6 x 4.7 cm



Landing Place
on the Northly



View to Fort St. Helena, St. Helena, from the bay, with the
mountain & the bay from left bank of the bay. 1826

MS-3350
2014.67.4

Artist: Anthony Beale
Title: The St. Helena Collection, 1826 and the India Collection, 1858
Medium: album containing lithographs, drawings, watercolours and one photograph
Dimensions: 65.0 x 48.6 x 4.7 cm



View of Allalabas

Allalabas Pond



Viewing the River at Allalabas



MS-3350
2014.67.4

Artist: Anthony Beale
Title: The St. Helena Collection, 1826 and the India Collection, 1858
Medium: album containing lithographs, drawings, watercolours and one photograph
Dimensions: 65.0 x 48.6 x 4.7 cm



Temple de Jéhu - Himalayas



MS-3350
2014.67.4

Artist: Anthony Beale
Title: The St. Helena Collection, 1826 and the India Collection, 1858
Medium: album containing lithographs, drawings, watercolours and one photograph
Dimensions: 65.0 x 48.6 x 4.7 cm



MS-3350
2014.67.4

Artist: Anthony Beale

Title: The St. Helena Collection, 1826 and the India Collection, 1858

Medium: album containing lithographs, drawings, watercolours and one photograph

Dimensions: 65.0 x 48.6 x 4.7 cm



Madras



Madras



MS-3350
2014.67.4

Artist: Anthony Beale
Title: The St. Helena Collection, 1826 and the India Collection, 1858
Medium: album containing lithographs, drawings, watercolours and one photograph
Dimensions: 65.0 x 48.6 x 4.7 cm



*England
The scene of the Court*



MS-3350
2014.67.4

Artist: Anthony Beale
Title: The St. Helena Collection, 1826 and the India Collection, 1858
Medium: album containing lithographs, drawings, watercolours and one photograph
Dimensions: 65.0 x 48.6 x 4.7 cm



Caravan to Beas



MS-3350
2014.67.4

Artist: Anthony Beale
Title: The St. Helena Collection, 1826 and the India Collection, 1858
Medium: album containing lithographs, drawings, watercolours and one photograph
Dimensions: 65.0 x 48.6 x 4.7 cm



Solra



Benapur

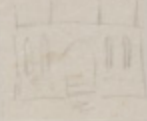


MS-3350
2014.67.4

Artist: Anthony Beale
Title: The St. Helena Collection, 1826 and the India Collection, 1858
Medium: album containing lithographs, drawings, watercolours and one photograph
Dimensions: 65.0 x 48.6 x 4.7 cm



Well at Bangalore
in 1887 —



MS-3350
2014.67.4

Artist: Anthony Beale
Title: The St. Helena Collection, 1826 and the India Collection, 1858
Medium: album containing lithographs, drawings, watercolours and one photograph
Dimensions: 65.0 x 48.6 x 4.7 cm



Antlia by Beale



MS-3350
2014.67.4

Artist: Anthony Beale
Title: The St. Helena Collection, 1826 and the India Collection, 1858
Medium: album containing lithographs, drawings, watercolours and one photograph
Dimensions: 65.0 x 48.6 x 4.7 cm



Khota

MS-3350
2014.67.4

Artist: Anthony Beale
Title: The St. Helena Collection, 1826 and the India Collection, 1858
Medium: album containing lithographs, drawings, watercolours and one photograph
Dimensions: 65.0 x 48.6 x 4.7 cm



Serbia



*Forward
at Kuntarpo*

MS-3350
2014.67.4

Artist: Anthony Beale
Title: The St. Helena Collection, 1826 and the India Collection, 1858
Medium: album containing lithographs, drawings, watercolours and one photograph
Dimensions: 65.0 x 48.6 x 4.7 cm



Mary's Palace



MS-3350
2014.67.4

Artist: Anthony Beale
Title: The St. Helena Collection, 1826 and the India Collection, 1858
Medium: album containing lithographs, drawings, watercolours and one photograph
Dimensions: 65.0 x 48.0 x 4.7 cm



*Small hut on the
bank*



*View from the balcony from the
house*

MS-3350
2014.67.4

Artist: Anthony Beale
Title: The St. Helena Collection, 1826 and the India Collection, 1858
Medium: album containing lithographs, drawings, watercolours and one photograph
Dimensions: 65.0 x 48.6 x 4.7 cm



MS-3350
2014.67.4

Artist: Anthony Beale

Title: The St. Helena Collection, 1826 and the India Collection, 1858

Medium: album containing lithographs, drawings, watercolours and one photograph

Dimensions: 65.0 x 48.6 x 4.7 cm



Haridwar, Lahore



Qasba to Meer



Delhiana

MS-3350
2014.67.4

Artist: Anthony Beale

Title: The St. Helena Collection, 1826 and the India Collection, 1858

Medium: album containing lithographs, drawings, watercolours and one photograph

Dimensions: 65.0 x 48.6 x 4.7 cm



*Taj Mahal
Agra Ind*



End of day



MS-3350
2014.67.4

Artist: Anthony Beale
Title: The St. Helena Collection, 1826 and the India Collection, 1858
Medium: album containing lithographs, drawings, watercolours and one photograph
Dimensions: 65.0 x 48.6 x 4.7 cm



The camp at Rhaton



The Khatun's house Rhaton

MS-3350
2014.67.4

Artist: Anthony Beale

Title: The St. Helena Collection, 1826 and the India Collection, 1858

Medium: album contains lithographs, drawings, watercolours and one photograph



*Bathmore
in the Feluna
from sketches of W. Simpson*



Bathmore through from Simpson

MS-3350
2014.67.4

Artist: Anthony Beale
Title: The St. Helena Collection, 1826 and the India Collection, 1858
Medium: album containing lithographs, drawings, watercolours and one photograph



at Sahelpur



Old Mosque at Sahelpur

MS-3350
2014.67.4

Artist: Anthony Beale
Title: The St. Helena Collection, 1826 and the India Collection, 1858
Medium: album containing lithographs, drawings, watercolours and one photograph



Kotlat



MS-3350
2014.67.4

Artist: Anthony Beale
Title: The St. Helena Collection, 1826 and the India Collection, 1858
Medium: album containing lithographs, drawings, watercolours and one photograph



From the Fort at Khilkee



View of Hongkong
H. Beale 1858

MS-3350
2014.67.4

Artist: Anthony Beale
Title: The St. Helena Collection, 1826 and the India Collection, 1858
Medium: album containing lithographs, drawings, watercolours and one photograph



Shingle Bay



*From the plain from the
Linnæa looking towards the
prairie*



MS-3350
2014.67.4

Artist: Anthony Beale
Title: The St. Helena Collection, 1826 and the India Collection, 1858
Medium: album containing lithographs, drawings, watercolours and one photograph



*India 94
Sunder 51*



*India 94
Sunder 51*



MS-3350

2014.67.4

Artist: Anthony Beale

Title: The St. Helena Collection, 1826 and the India Collection, 1858

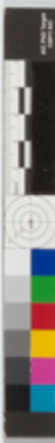
Medium: Watercolor, gouache, and ink on paper



6695



Handwritten signature or inscription



MS-3350
2014.67.4

Artist: Anthony Beale
Title: The St. Helena Collection, 1826 and the India Collection, 1858
Medium: albumen, engraving, lithographs, drawings, watercolours and one photograph



Jack



Annandale Lintock



MS-3350

2014.67.4

Artist: Anthony Beale

Title: The St. Helena Collection, 1826 and the India Collection, 1858
Medium: watercolours and one photograph



Beale



MS-3350
2014.67.4

Artist: Anthony Beale

Title: The St. Helena Collection, 1826 and the India Collection, 1858
Medium: watercolours and one photograph



St. Helena

1826



MS-3350
2014.67.4

Artist: Anthony Beale

Title: The St. Helena Collection, 1826 and the India Collection, 1858

Medium: album contains lithographs, drawings, watercolours and one photograph



MS-3350

2014.67.4

Artist: Anthony Beale

Title: The St. Helena Collection, 1826 and the India Collection, 1858

Medium: album containing lithographs, drawings, watercolours and one photograph



MS 3350
2014.67.4

Artist: Anthony Beale

Title: The St. Helena Collection, 1826 and the India Collection, 1858

Medium: album containing lithographs, drawings, watercolours and one photograph

Dimensions: 65.0 x 48.6 x 4.7 cm



MS-3350
2014.67.4

Artist: Anthony Beale
Title: The St. Helena Collection, 1826 and the India Collection, 1858
Medium: album containing lithographs, drawings, watercolours and one photograph
Dimensions: 65.0 x 48.6 x 4.7 cm



MS-3350
2014.67.4

Artist: Anthony Beale
Title: The St. Helena Collection, 1826 and the India Collection, 1858
Medium: album containing lithographs, drawings, watercolours and one photograph
Dimensions: 65.0 x 48.6 x 4.7 cm



MS 2202
2014.67.4

Artist: Anthony Burns

Title: The St. Helena Collection, 1858 and the India Collection, 1859

Medium: album containing lithographs, drawings, watercolors and one photograph

Dimensions: 95.2 x 65.0 x 4.7 cm

