

PHOTOGRAPHIC VIEWS
OF
BRITISH COLUMBIA

TAKEN
BY F. DALLY

1867-1868

DALLY

4

Photographic Views of British Columbia taken by Frederick Dally.

Page.

Angela College.....	Victoria, B.C.	p.1.
The Guard House.....	Government House	p.2.
Officers of "H.M.S. Suttlej" showing Admiral and Mrs Denman.....	" " "	p.3.
Government House,	North View	p.4.
" "	East View	
Officers of H.M.S. Zealous..	Admiral and Mrs Denman ^{Hastings}	p.6.
Government House.....	South View	p.7.
" "	Front View	p.8.
Seymour, Frederick, Governor of B.C.....		p.8.
" " (Mrs) wife of the Governor of B.C.....		p.8.
" " - Grave at R.N. Cemetery, Esquimalt.....		p.9.
^{ward} Ellis , Captain Henry.....	home, Fort St., Victoria ^{Rockland Ave.}	p.10.
⁴¹⁵⁹ Seymour, Frederick - Family group.....		p.11
Government House - Interior.....		p.11
Naval Cemetery- Esquimalt.....		p. 12.
Fort St., Victoria.....		p.13.
Government Street, Victoria.....		p.14.
Victoria Harbour.....		p. 15
A View on the Fraser River., New Westminster.....		p. 16
James Bay Bridge...Victoria.....		p. 17
The Gorge, Victoria Arm, V.I.....		p. 18
Indian Woman on Horseback.....		p. 19
Indian Group, B.C. - Chief of the Bonapartes in fur cap.....		p. 20
The Gorge Retreat..-Victoria Arm, B.C.....		p. 21.
" " - Victoria Arm- Vancouver Island, B.C.....		p. 22
Government House...New Westminster.....		p.23.
A View at Sooke - of Muirs lumber Mill.....		p.24.
The band of the Victoria Volunteers Corps.....		p. 25
Interior of St. John's Church...Victoria.....		p. 26.
The British Camp, San Juan Island.....		p. 27.
Indian Monumental Carvings, Comox, V.I.....		p. 28
Interior of Esquimalt Church.....		p. 29.
Esquimalt Harbor- shipping - showing Egmont, etc. etc.....		p.30.
H.M.S. Suttlej Monument - erected to Officers and men		p.31
San Juan Harbour - Indian Chief's Grave.....		p. 32.
The town of Esquimalt.....		p. 33.
Musquiam Indians encamped on the banks of the Fraser R. at N.W.....		p. 34.
Group of Indian Chiefs. (named).....		p. 35.
British Columbia Siwashes - Lillooet B.C.....		p. 36.
Columbia St, New Westminster.....		p. 37.
A View of the woods at Burrard Inlet. (see Vancouver).....		p.38.
Anderson Lake, B.C.....		p. 39
Yale, the head of Navigation, 175 Miles from Victoria, B.C.....		p. 40.
Yale.....		p. 41.
Mule team at Yale, starting with freight for the Cariboo mines.....		p. 42.
Emory's Bar - three miles below Yale.....		p. 43.
The Three Mile Canyon above Yale, B.C.....		p.44.
Indians encamped on the Fraser River.....		p. 45.
Indian graves showing offerings to the dead.....		p. 46.

Vol.4 continued.....

Indian Salmon caches, Fraser River.....	p. 47.
Eight Mile Canyon above Yale.....	p. 48.
Indian Chief's grave at Chapman's Bar, Fraser River.....	p. 49.
A View on the Great Waggon Road, Fraser River.....	p. 50.
The Alexandra Suspension Bridge across the Fraser River, 13 m. above Yale. p.	51.
Nicaragua Slide - Waggon Road Fraser River.....	p. 52.
Alexander's 14 Mile House, B.C.....	p. 53.
Chapman's Bar Bluff.....Fraser River.....	p. 54.
A View at the 17 Mile Post, Fraser River.....	p. 55.
A View at the 19 Mile post, with mule teams going over the Mountain.....	p. 56.
Indian Chief's Grave near Lytton, Fraser River.....	p. 57.
The Ascent to China Bar Bluff.....	p. 58.
Hell's Gate Canyon on the Great Canyon.....	p. 59.
China Bar Bluff - 22 mile Post, 1300' above the Fraser R.....	p. 60.
Jackass Mt. - showing road over the Precipice.....	p. 61.
" " - ,.....	p. 62.
Waterfall.....	p. 63.
Jackass Mountain, Fraser River.....	p. 64.
Spences Bridge, across the Thompson.....	p. 65.
Lytton - the junction of the Fraser and Thompson.....	p. 66.
Boothroyds Lake, B.C.....	p. 67.
Waterfall, Thompson River.....	p. 68.
View of the 84 Mile post, Thompson River.....	p. 69.
The Great Bluff on the Thompson River at the 88 Mile post.....	p. 70.
The Little Bluff - Thompson River.....	p. 71.
A team at Clinton with freight for the Cariboo Mines.....	p. 72.
Horseshow Lake, B.C.....	p. 73.
Clinton, B.C. - 136 miles from Yale.....	p. 74.
The Great Chasm - 11 miles above Clinton.....	p. 75.
Cornwall's Ranch on the Thompson River.....	p. 76.
Lac La Pêche, B.C.....	p. 77.
Soda Creek - Fraser River.....	p. 78.
Soda Creek Landing, Fraser River.....	p. 79.
A pack team on the bank of the Quesnelle River.....	p. 80.
The Mouth of the Quesnelle showing the junction with the Fraser River.....	p. 81.
Richfield - Government Buildings, 621 miles from Victoria.....	p. 82.
Groundhog Lake and Mount Agnes.....	p. 83.
Richfield - Cariboo.....	p. 84.
Williams Creek Camp, Cariboo.....	p. 85.
The Aurora Company.....	p. 86.
The Aurora Wheel, Williams Creek.....	p. 87.
The Davis Wheel, ".....	p. 88.
Barkerville - before the fire.....	p. 89.
" - the morning after the fire, Sept. 12th, 1868.....	p. 90.
Bill Phinney's Rocking tailings.....	p. 91.
The Ne'er do well Dump box.....	p. 92.
The Sheepshead shaft.....	p. 92.
The Never Sweat Tunnel Company.....	p. 93.
The Heronville, Grouse Creek - showing the disputed ground.....	p. 93.
The Canadian Company, Grouse Creek.....	p. 94.

We have this

7d



37756

Angela College - Victoria -





P2.

The Guard House - Government House - 7760

We have this



203

583

*Officers of "Able" group - Admiral Demman -
Mrs Demman etc.*



Officers of "dublet" group

names of Jamaica etc

We have this

1911



Government House - North View.

8199





p.5.

73345

North East View - of Govt House -

We have this



96.

596

*Officers and crew of the U.S.S. Albatross
at sea during the voyage.*



We have this

p. 7.



South View of Government House

7906





We have not this



22308

p.8



We have not this

80144

We have this



4153

We have not this



76066

We have not this

69



614646

The Pale Governor Seymour's grave at the River
Corner Edgemoor



We have not this

p10



34553





part.

4159



1

34550



2

34551



3

34552

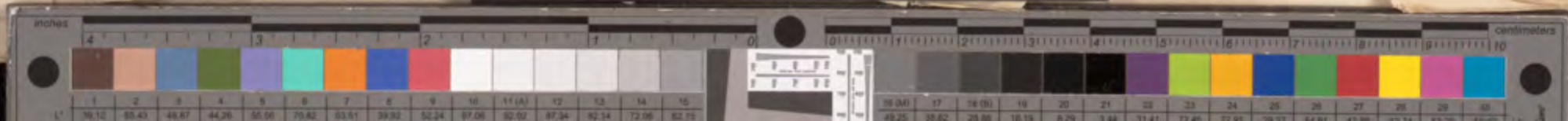
We have this



A. 12.

The Naval Cemetery Edinvalle.

8831

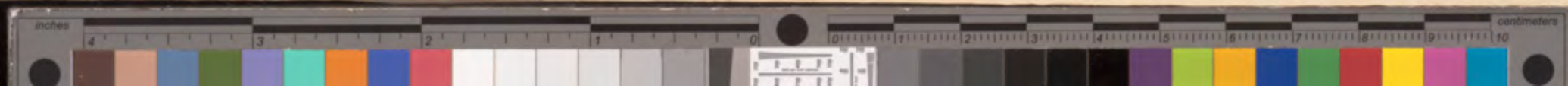




P. 13.

8694

Port-Street, Victoria



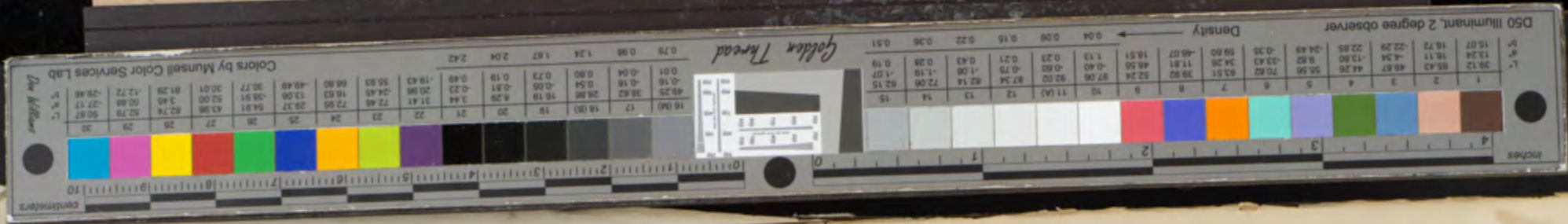


P.14



7893

Government Street -



We have this



p. 15

7907

Victoria Harbour

Golden Thread

Colors by Munsell Color Services Lab		Density	
1	2	3	4
5	6	7	8
9	10	11(A)	12
13	14	15	16
17	18(B)	19	20
21	22	23	24
25	26	27	28
29	30		



P. 16

80093

A View on the Fraser river - at New Westminster

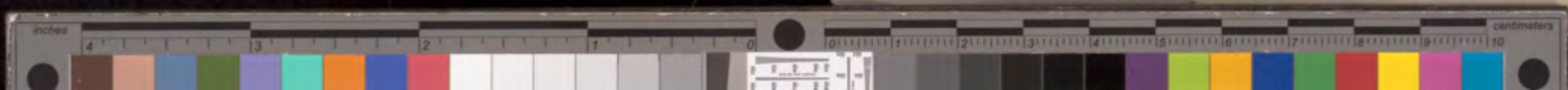
We have this



p. 17

St James Bay Bridge - Victoria

64721





We have this

P. 18



8042

The Gorge - Victoria Arm - V.I. -



b.19

57626

Indian woman on
Hollabach - B. G.



Indian Group - D. C.
His was just chief of the *Donapactes* in fur cap -

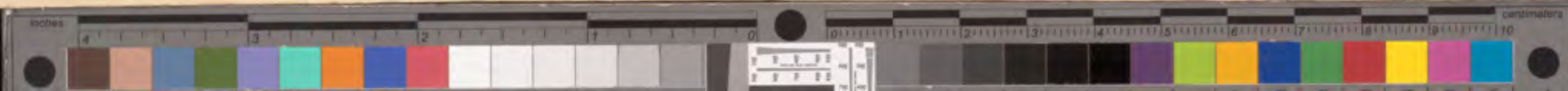
We have not this



P21

8626

The Gorge Retreat - Victoria Arm - 1906 -





We have not this

P22



94632

The Gorge - V. A. - V. I. B. C.



We Love This



0.23

B176

Government House - New Westminster

Government Forces - New Westminster

8170



024

11229(a)

A View at Lake - of Muir's Lumber Mill N.W.



We have not this

p. 25



The band of the Victoria Volunteer Corps.

13193





We have not this



Pa. 6.

15253

Interior of St. John's Church - Victoria -

Colors by Munsell Color Services Lab	1	2	3	4	5	6	7	8	9	10	11 (A)	12	13	14	15	16 (M)	17	18 (B)	19	20	21	22	23	24	25	26	27	28	29	30
L*	39.12	65.43	49.87	44.26	55.56	70.82	63.51	39.92	52.24	97.06	92.02	87.34	82.14	72.06	62.15	51.10	41.23	31.41	21.05	10.80	3.44	0.23	0.23	0.48	0.99	1.87	2.04	2.42		
a*	13.24	18.11	4.34	13.80	9.82	-33.43	34.26	11.81	48.55	-0.40	-0.60	-0.75	-1.06	-1.19	-1.07	-0.16	-0.18	0.54	0.05	0.73	0.19	0.48	0.48	0.16	-0.04	0.18	0.01	0.76	0.98	1.24
b*	-29.46	-27.17	50.89	34.26	-33.43	59.89	-46.07	18.51	1.13	1.13	0.23	0.21	0.43	0.28	0.19	0.82	0.82	0.57	0.29	0.81	0.23	0.23	0.48	0.16	-0.04	0.18	0.01	0.76	0.98	1.24



27

12718

The British Camp - San Juan Island -



28

57622

Indian Monumental Carvings - Comox - B.C.



We have not this.



Interior of Esquimaux Church -

29.

94518

We have not this



Edmund J. Guinnall Harbor -
"Sparrowhawk"
"Beaver" "Alexander"
"Malacca"
"Shearwater"
"Grapple"

27378



"Sulley" Monument - Erected to the
 memory of the Officers & Men who died
 during a four years commission on the
 Pacific 31





A man's chest buried in his canoe 1710

Colors by Munsell Color Services Lab

Color	L*	a*	b*	Density
1	38.12	13.80	15.49	0.04
2	65.43	24.49	9.96	0.04
3	49.87	43.96	14.31	0.04
4	44.26	39.92	34.26	0.04
5	55.56	43.96	57.24	0.04
6	70.82	17.32	28.26	0.04
7	63.51	34.26	11.81	0.04
8	39.92	52.43	34.26	0.04
9	49.87	39.92	52.43	0.04
10	70.82	17.32	28.26	0.04
11	39.92	52.43	34.26	0.04
12	49.87	39.92	52.43	0.04
13	70.82	17.32	28.26	0.04
14	39.92	52.43	34.26	0.04
15	49.87	39.92	52.43	0.04
16	70.82	17.32	28.26	0.04
17	39.92	52.43	34.26	0.04
18	49.87	39.92	52.43	0.04
19	70.82	17.32	28.26	0.04
20	39.92	52.43	34.26	0.04
21	49.87	39.92	52.43	0.04
22	70.82	17.32	28.26	0.04
23	39.92	52.43	34.26	0.04
24	49.87	39.92	52.43	0.04
25	70.82	17.32	28.26	0.04
26	39.92	52.43	34.26	0.04
27	49.87	39.92	52.43	0.04
28	70.82	17.32	28.26	0.04
29	39.92	52.43	34.26	0.04
30	49.87	39.92	52.43	0.04
31	70.82	17.32	28.26	0.04
32	39.92	52.43	34.26	0.04
33	49.87	39.92	52.43	0.04
34	70.82	17.32	28.26	0.04
35	39.92	52.43	34.26	0.04
36	49.87	39.92	52.43	0.04
37	70.82	17.32	28.26	0.04
38	39.92	52.43	34.26	0.04
39	49.87	39.92	52.43	0.04
40	70.82	17.32	28.26	0.04
41	39.92	52.43	34.26	0.04
42	49.87	39.92	52.43	0.04
43	70.82	17.32	28.26	0.04
44	39.92	52.43	34.26	0.04
45	49.87	39.92	52.43	0.04
46	70.82	17.32	28.26	0.04
47	39.92	52.43	34.26	0.04
48	49.87	39.92	52.43	0.04
49	70.82	17.32	28.26	0.04
50	39.92	52.43	34.26	0.04

D50 Illuminant, 2 degree observer

Golden Thread

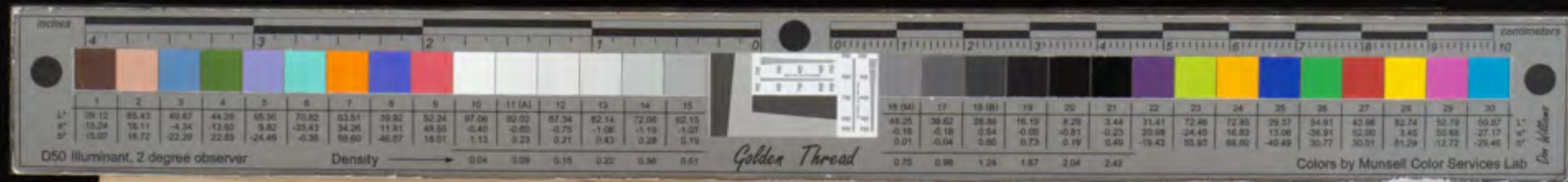
We have this

33



The Town of Esquimaux

B. C.





34



57615

Mosquito Indians encamped on the banks
of the river near New York -



35



1. Ja. o'tack
Canoe Creek Chief

2. William
William's Lake

57591

3. Na:nah
Dog Creek

4. Quil'quarie
Alkali Lake

5. Se-as.kut
Shushwap

6. Simpt.khan
Babine Lake

7. Silkosalid
Lilloelt
Kam eo saltpe
Soda Creek

8. Sosastimpt
Bridge Creek

61



71720

36



71720

British Columbian Siwash.
Lilloett. B. C.

37



37

Colombus Street New W.

B172



38



A View of the Woods at Merras's Inlet - B.C. 9014





We have not this



39

Anderson Lake - B.C.

94633



40

original photo taken by
Carrick -

Yale - the head of navigation
175 miles from Victoria - B.C.

973a



14

Yale -

Cherry's river

95332

D50 Illuminant, 2 degree observer

1	2	3	4	5	6	7	8	9	10	11 (A)	12	13	14	15	16 (M)	17	18 (B)	19	20	21	22	23	24	25	26	27	28	29	30
38.12	65.43	49.87	44.26	55.56	70.82	63.51	39.92	52.24	97.06	92.02	87.34	82.14	72.06	62.15	49.25	38.62	28.86	16.19	8.29	3.44	31.41	72.48	72.95	29.37	54.91	43.96	82.74	52.79	50.87
13.24	16.51	-4.34	-13.80	9.82	-33.43	34.26	11.81	48.55	-0.40	-0.80	-0.75	-1.06	-1.19	-1.07	-0.16	-0.18	0.54	-0.05	-0.81	-0.23	20.98	-24.45	16.83	13.06	-38.91	52.00	3.45	50.88	-27.17
15.07	18.72	-22.29	22.85	-24.49	-0.36	59.60	-48.07	16.51	1.13	0.23	0.21	0.43	0.28	0.19	0.01	-0.04	0.60	0.73	0.18	0.49	-16.43	55.93	68.80	-48.49	30.77	30.01	81.29	-12.72	29.46
Density → 0.04 0.09 0.15 0.22 0.36 0.51															Golden Thread					Colors by Munsell Color Services Lab									



42

Mule train getting ready, starting with freight

9776



Emerys bar - 3 miles below Gale -
 The Cascade range of mountains in the distance -





We have this

44

The Three mile Canyon above Yale N.C.

10945



45

57619

Indians Encamped on the Tualatin River.

97



Indian graves showing the offerings to the dead -
 with the idea that their worldly goods will be useful to the departed in the happy
 hunting grounds - "No white men there"!!

57804

D50 Illuminant, 2 degree observer

1	2	3	4	5	6	7	8	9	10	11 (A)	12	13	14	15	16 (M)	17	18 (B)	19	20	21	22	23	24	25	26	27	28	29	30
39.12	65.43	49.87	44.26	55.56	70.82	63.51	39.92	52.24	97.06	92.02	87.34	82.14	72.06	62.15	49.25	38.62	28.86	16.19	6.29	3.44	31.41	72.46	72.56	29.27	54.91	43.96	85.74	82.79	50.87
13.24	18.11	-4.34	-13.80	9.82	-33.43	34.26	11.81	48.55	-0.40	-0.60	-0.75	-1.06	-1.18	-1.07	-0.16	-0.18	0.54	-0.08	-0.81	-0.23	20.96	-24.43	18.83	13.98	-38.91	82.00	3.40	50.80	-27.11
15.07	18.72	-22.29	22.89	-24.49	-0.35	58.65	-48.27	16.51	1.13	0.23	0.21	0.43	0.28	0.19	0.01	-0.04	0.65	0.73	0.19	0.49	-18.43	55.93	68.80	-48.48	30.77	30.01	81.29	-12.75	-29.46
Density → 0.04 0.09 0.15 0.22 0.38 0.51															Golden Thread 0.75 0.98 1.24 1.67 2.04 2.42														

Colors by Munsell Color Services Lab

47



57595

Indian Salmon Caches, Gracie River, Showing Salmon net & spears - primitive ladders - etc





48

The Eight Mile Canyon above Yale -

10946



67

The Indian Chiefs game "Ladoshis"
at Chapman's Bar - Trask's River

57599

We have the

50



#10228

A View on the Great Wagon Road Trace River N.C.

D50 Illuminant, 2 degree observer

1	2	3	4	5	6	7	8	9	10	11 (A)	12	13	14	15	16 (M)	17	18 (B)	19	20	21	22	23	24	25	26	27	28	29	30
39.12	65.43	49.87	44.26	55.56	71.62	63.51	39.92	52.24	97.06	82.02	87.34	52.14	72.06	82.15	40.25	38.62	28.86	16.19	8.29	3.44	31.41	72.46	72.96	29.37	54.91	43.96	82.74	52.79	50.87
13.24	18.11	-4.34	-13.80	9.82	-33.43	34.26	11.81	48.56	-0.40	-0.80	-0.75	-1.96	-1.18	-1.07	-0.16	-0.18	0.54	-0.05	-0.81	-0.22	20.96	-24.45	16.83	13.08	-38.91	52.00	3.40	50.88	-27.17
16.07	18.72	-22.26	22.85	-24.49	-0.35	50.80	-48.07	18.51	1.13	0.23	0.21	0.43	0.28	0.19	0.01	-0.04	0.80	0.73	0.18	0.48	-18.43	58.93	68.80	-48.49	30.77	30.01	81.29	-12.72	-25.46
Density → 0.04 0.09 0.15 0.22 0.36 0.51															0.75 0.99 1.24 1.67 2.04 2.42														

Golden Thread Colors by Munsell Color Services Lab

We have this

51



*10294

The Alexander Suspension Bridge across the Tross
13 miles above Yale -





10225
Missionary Slide - Wasson Road - Fraser River



Trabun Bay



53

Alexander's 14 mile House N. 6 -

10221

Wetland... Mile # 10.6

we have not this



57

41050

Chapman's Bar Bluff: Trans. River

inches 4 3 2 1 0 centimeters 10

1	2	3	4	5	6	7	8	9	10	11(A)	12	13	14	15	16(M)	17	18(B)	19	20	21	22	23	24	25	26	27	28	29	30	
L*	39.12	65.43	49.87	44.26	55.56	70.82	63.51	39.92	52.24	97.06	92.02	87.34	82.14	72.06	62.15	49.25	38.62	28.86	16.19	8.29	3.44	31.41	72.40	72.06	29.37	54.91	43.96	82.74	52.79	50.87
a*	13.24	18.11	-4.34	-13.80	9.82	-33.43	34.26	11.81	-48.55	-0.40	-0.60	-0.75	-1.08	-1.19	-1.07	-0.16	-0.16	-0.54	-0.96	-0.81	-0.23	20.98	-24.45	16.83	13.06	-38.91	52.00	3.40	50.88	-27.17
b*	15.07	18.72	-22.29	22.85	-24.49	-0.35	59.63	-46.07	18.51	1.13	0.23	0.21	0.43	0.39	0.18	0.01	-0.04	0.60	0.73	0.19	0.49	-19.43	55.93	66.80	-49.49	30.77	30.01	81.29	-12.72	-29.46
Density										0.04	0.09	0.15	0.22	0.36	0.51	0.75	0.98	1.24	1.67	2.04	2.42									

D50 Illuminant, 2 degree observer Golden Thread Colors by Munsell Color Services Lab

We have this

55



A View at the 14 miles post - Trace Mine

10234





We know this

29



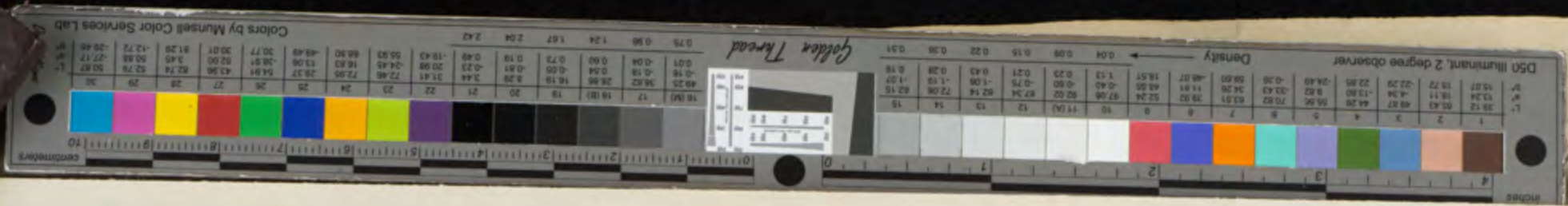
A View at the 19 miles post with mule
teams going over the mountain.

10222(a)



57

Indian Camp near Lytle Texas
57592(a)



58

The knee has

We have this



Chinua Bas. Bluff — 22 Mile Post 10223
1300 feet above the Fraser R. —

60



See back



61
Jacksals Mountain 10236
Showing the road the "recesses"



62

24520

Flachholz-Steinwand



We have not this



63

Waterfall - W. T.

94634

Golden Thread

D50 Illuminant, 2 degree observer

Density

1	2	3	4	5	6	7	8	9	10	11(A)	12	13	14	15
39.12	65.43	49.87	44.26	55.56	70.82	63.51	39.92	52.24	87.06	82.02	87.34	82.14	72.06	62.15
13.24	18.11	13.80	-13.80	8.82	-32.43	34.26	11.81	48.55	-0.49	-0.60	-0.75	-1.06	-1.19	-1.07
15.07	18.72	18.72	22.29	22.85	-24.45	-0.36	59.80	-46.07	16.51	1.13	0.23	0.43	0.28	0.19
									0.54	0.09	0.15	0.22	0.36	0.51

Density → 0.04 0.09 0.15 0.22 0.36 0.51

inches

centimeters

1	2	3	4	5	6	7	8	9	10	11	12	13	14	15
38.12	65.43	49.87	44.26	55.56	70.82	63.51	39.92	52.24	87.06	82.02	87.34	82.14	72.06	62.15
13.24	18.11	13.80	-13.80	8.82	-32.43	34.26	11.81	48.55	-0.49	-0.60	-0.75	-1.06	-1.19	-1.07
15.07	18.72	18.72	22.29	22.85	-24.45	-0.36	59.80	-46.07	16.51	1.13	0.23	0.43	0.28	0.19
									0.54	0.09	0.15	0.22	0.36	0.51

Colors by Munsell Color Services Lab



64

W. L. ...

Zuckers Mountain Tract Mine

10235

Golden Thread

D50 Illuminant, 2 degree observer

Density

1	2	3	4	5	6	7	8	9	10	11 (A)	12	13	14	15
0.04	0.09	0.15	0.22	0.36	0.51	0.75	1.06	1.48	1.95	2.48	3.09	3.78	4.56	5.44
0.04	0.09	0.15	0.22	0.36	0.51	0.75	1.06	1.48	1.95	2.48	3.09	3.78	4.56	5.44

Colors by Munsell Color Services Lab

1	2	3	4	5	6	7	8	9	10	11	12	13	14	15
38.12	39.92	42.02	44.26	46.62	49.10	51.71	54.45	57.32	60.32	63.45	66.71	70.10	73.62	77.27
13.24	14.71	16.24	17.82	19.45	21.13	22.86	24.64	26.47	28.35	30.28	32.26	34.29	36.37	38.50
15.07	16.77	18.52	20.31	22.14	24.01	25.92	27.87	29.86	31.89	33.96	36.07	38.21	40.39	42.61

We look thru



65

9715

Spencer's Bridge - across the Thompsons

We have this

99



Thompson's town built by the same Thompson

9658

D50 Illuminant, 2 degree observer

Density	0.04	0.09	0.15	0.22	0.36	0.51	0.75	0.98	1.24	1.67	2.04	2.42
---------	------	------	------	------	------	------	------	------	------	------	------	------

Golden Thread

16 (M)	17	18 (B)	19	20	21	22	23	24	25	26	27	28	29	30
L*	49.25	38.62	28.86	16.19	8.29	3.44	31.41	72.46	72.95	29.37	54.91	43.96	52.74	52.79
a*	-0.16	-0.18	0.54	-0.25	-0.81	-0.23	20.96	-24.45	16.83	13.06	-38.91	52.00	3.45	50.88
b*	0.01	-0.04	0.60	0.73	0.19	0.49	-19.43	55.93	66.80	-49.49	30.77	30.01	81.29	-12.72

Color by Munsell Color Services



67

Buttercup Lake N.C.

10831

inches 4 3 2 1 0 centimeters 10

1	2	3	4	5	6	7	8	9	10	11 (A)	12	13	14	15
38.12	50.43	49.87	44.26	35.96	25.82	13.81	25.82	52.34	97.06	92.02	87.34	82.14	72.00	62.15
13.24	18.11	-4.34	-13.80	9.52	-33.43	34.26	11.81	48.55	-0.40	-0.60	-0.75	-1.06	-1.18	-1.07
15.07	19.72	-22.29	22.85	-24.48	-0.35	59.60	-48.07	19.51	1.13	0.23	0.21	0.43	0.28	0.19

D50 Illuminant, 2 degree observer

16 (M)	17	18 (B)	19	20	21	22	23	24	25	26	27	28	29	30
49.25	38.62	28.86	18.19	9.29	3.44	31.41	72.46	72.95	25.37	54.91	43.96	82.74	52.79	30.47
-0.10	-0.16	0.54	-0.05	-0.51	-0.23	20.96	-24.45	16.83	13.06	-38.91	52.00	3.40	90.88	-27.17
0.01	-0.04	0.60	0.73	0.19	0.48	-18.43	55.92	65.80	18.43					

Density 0.04 0.09 0.15 0.22 0.36 0.51

Golden Thread



Waterfall ⁶⁸ -
Thompson River

10579



69

9718

View at the 04 mile point Thompson, N.H.

Thompson, Nevada

See this

70



The Great Bluff - on the Thompson River
at the 80 mile mark

463

D50 Illuminant, 2 degree observer

1	2	3	4	5	6	7	8	9	10	11 (A)	12	13	14	15
38.12	65.43	49.87	44.26	55.56	70.82	63.51	39.92	52.24	97.06	92.02	87.34	82.14	72.06	62.15
13.24	18.11	-4.34	-13.80	9.82	33.43	34.26	11.81	48.55	-0.40	-0.80	-0.75	-1.06	-1.19	-1.07
15.07	19.72	-22.29	22.85	-24.49	-0.35	59.60	-46.07	18.51	1.12	0.23	0.21	0.43	0.28	0.18

Density → 0.04 0.09 0.15 0.22 0.36 0.51

Golden Thread

16 (M)	17	18 (B)	19	20	21	22	23	24	25	26	27	28	29	30
49.25	38.62	28.86	16.19	0.29	2.44	31.41	72.46	72.95	29.37	54.91	43.96	82.74	52.79	50.87
-0.16	-0.18	0.84	-0.05	-0.81	-0.23	26.96	-24.45	16.83	15.06	-58.91	52.00	3.45	10.89	27.17
0.31	-0.04	0.80	0.73	0.19	0.48	-19.43	65.93	89.60	-48.49	30.77	30.01	81.29	-12.72	-29.46

inches centimeters

71



10242

The little bluff - Thompsons Mines

Golden Thread

D50 Illuminant, 2 degree observer

1	2	3	4	5	6	7	8	9	10	11 (A)	12	13	14	15	16 (M)	17	18 (B)	19	20	21	22	23	24	25	26	27	28	29	30	
L*	39.12	65.43	49.87	44.26	55.56	70.82	63.51	39.92	52.24	97.06	92.02	87.34	82.14	72.06	62.15	49.25	38.62	28.86	16.19	8.29	3.44	31.41	72.48	72.95	29.37	54.91	43.96	82.74	52.79	50.87
a*	13.24	18.11	-4.34	-13.80	9.82	-33.43	34.26	11.81	48.55	-0.40	-0.60	-0.75	-1.06	-1.19	-1.07	-0.16	-0.18	0.54	-0.06	-0.81	0.23	20.96	-24.45	16.83	13.06	38.91	52.00	3.45	50.88	-27.17
b*	15.07	18.72	-22.29	22.85	-24.49	-0.35	59.60	-48.07	16.51	1.13	0.23	0.21	0.43	0.28	0.19	0.01	-0.04	0.60	0.73	0.19	0.49	-19.43	50.93	68.80	-49.49	30.77	30.01	81.29	-12.72	-29.46
Density											0.04	0.09	0.15	0.22	0.36	0.51	0.75	0.99	1.24	1.67	2.04	2.42								

Colors by Munsell Color Services Lab



We have this



72

758

*by team at Clinton with freight for the
Pacific mines*



We have this

73



Horse Shoe Lake B.C.

10259

30712
2,724
and 19
2000 feet

We have this

75



10246

"The Great Chasm" 11 miles above Chautauque
about 4 1/2 miles long 1000 ft broad & 960 ft deep





We have this



76

1319L

Cornwall's Ranch on the Thompson River

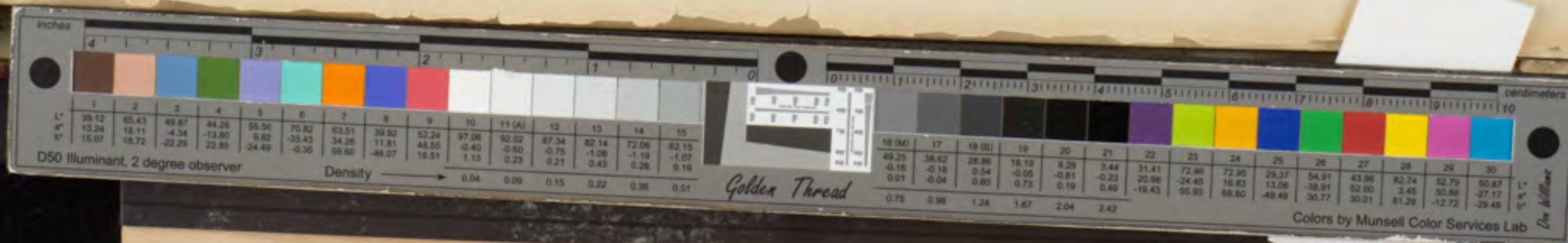
We have this



77

Lake La Hache B. 6

10258



San India

78



Soda Creek - Fraser River

94528

Van M... ..

inches 4 3 2 1 0 1 2 3 4 5 6 7 8 9 10 11 (A) 12 13 14 15

1	2	3	4	5	6	7	8	9	10	11 (A)	12	13	14	15
39.12	65.43	49.87	44.26	55.56	70.82	63.51	39.92	52.24	97.06	92.02	87.34	82.14	72.06	62.15
13.24	18.11	-4.34	-13.80	9.82	-33.43	34.26	11.81	48.55	-0.40	-0.60	-0.75	-1.06	-1.19	-1.07
15.07	18.72	-22.29	22.85	-24.49	-0.35	59.60	-46.07	18.51	1.13	0.23	0.21	0.43	0.28	0.19

D50 Illuminant, 2 degree observer

Density → 0.04 0.09 0.15 0.22 0.36 0.51

Golden Thread

16 (M)	17	18 (B)	19	20	21	22	23	24	25	26	27	28	29	30
49.25	38.62	28.86	16.19	8.29	3.44	31.41	72.46	72.05	29.37	54.91	43.96	82.74	52.79	50.87
-0.18	-0.18	0.54	-0.05	-0.81	-0.23	20.98	-24.45	16.82	13.06	-38.91	52.00	3.45	50.88	-27.17
0.01	-0.04	0.60	0.73	0.19	0.49	-19.43	55.93	68.80	-45.49	30.77	30.01	81.29	-12.72	-29.46

centimeters 10

Colors by Munsell Color Services Lab

Don Williams

100 Lwr this

79



10268

Soda Creek landing Fraser River -
distance from Victoria 488 miles

What is near ... 100 ft ...

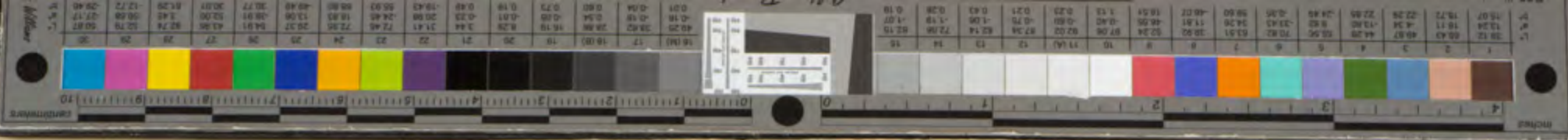
inches 4 3 2 1 0 centimeters 10

1	2	3	4	5	6	7	8	9	10	11 (A)	12	13	14	15	16 (M)	17	18 (B)	19	20	21	22	23	24	25	26	27	28	29	30	
L*	39.12	65.43	49.87	44.26	55.56	70.82	63.51	39.92	52.24	97.06	92.02	87.34	82.14	72.06	62.15	49.25	39.82	25.86	16.19	9.29	3.44	31.41	72.48	72.95	29.37	54.91	43.96	82.74	52.79	50.87
a*	13.24	18.11	-4.34	-13.80	9.82	-33.43	34.26	11.81	48.55	-0.40	-0.60	-0.75	-1.06	-1.19	-1.07	-0.16	-0.18	0.54	-0.05	-0.81	-0.23	20.96	24.45	16.83	13.05	-38.91	52.00	3.45	50.88	-27.17
b*	15.07	18.72	-22.29	22.85	-24.49	-0.35	59.60	-46.07	18.51	1.13	0.23	0.21	0.43	0.28	0.19	0.01	-0.04	0.60	0.73	0.19	0.49	-19.43	55.93	55.80	-49.49	30.77	30.01	81.29	-12.72	-29.46
Density										0.04	0.09	0.15	0.22	0.36	0.51	0.75	0.98	1.24	1.67	2.04	2.42									

D50 Illuminant, 2 degree observer

Golden Thread

Colors by Munsell Color Services Lab



80.

10478

A Pack team, on the banks of the
Linnelle River, waiting to cross the ferry.



81

The Mouth of the Linnelle, showing the junction
with the Fraser River,

10413

82



10948.

The Govt buildings, Court-house
 Richfield - Cariboo district
 621 miles from Victoria

10948





The lake is not the one also Vol 2, p. 37

Ground Hog Lake, & Mount-Regret
 "Little Sack of Clubs Lake"
 53

10790





We have this

84



Richfield Curiboo

10202



85

Richmond

The Pa Williams Creek, California

10495

86



The Aurora Company



87



The Aurora Wheel - Wellman's Creek -
 464 ozs of gold washed up for 24 hours work Augst 15th 1867.

1663





We have this

88



The Lavis Wheel Williams Creek

1232



89



Barberville - before the fire

764

6023

10,072. *W. L. ...*



26

10072

*Barker'sville on the morning after the fire
Sept 12th 1868*

W. L. ...





Bill Phinney's rocking tailings

767



well
the

765

91 The near the well dump Bill

765

L. J. Phinney





5189

The Sheep's head Shaft



The "Rear Sweat" Tunnel Company

92



We have this



93



*The Heronville Grouse Creek -
Showing the disrupted ground -*

10925



76

The Canadian Company Srouce Creek

July

1865

95



*View of Bendley from the camp of William ...
Bendley Bend Fort Rupert Vancouver Id. Conrichan, Ind. 1847*

an India





Sooke Indians Vancouver Island



Cowichan Indian Woman



Indian Chiefs B.C. 34249(6)



Songish Indians V.I.



Sheeshat Bandlay Seemid 94467



Sooke Indian 94475



Sheeshat Chief 94470



Clay sub-tribe Chemanus Chief 94466



Sooke Indian Woman 94471



Fort Rupert Indian 94472



Skiat Indian Bandlay Seemid 94473



Fort Rupert Mincaver Indian 94474



Cowichan Indians 96



Songish Indian V.I. 94475



Luamichan Indian 94476





see 19216 for full view
↓

97



94380
Chemamus chief
Flat-head



Sooke Klootch man
Flat-head



94477
Chief Indian Barclay Sound



94478
Sooke Indian
Woman



94480
Fort Rupert Indian



Esquimalt Harbor V. I. 94522



10187
Minnehaha dump box Cariboo



Esquimalt Church V. I. 5526



94481
Songish Indian Woman



94483
Comiaken Indian
Vancouver Island



Indian Boys Victoria. 94482

PORTION OF 19226
↓



Sheeshat Indian
Barclay Sound



19245
Nanaimo River Ind. B. C.

Singish Indian Woman

94451

Indian Boys Victoria. 94452

What Indian
Bar clay Sunset

Manum River Ind. S.P.C.

93



The Prarie Flower Company
Williams Creek - Caribou -

107206

