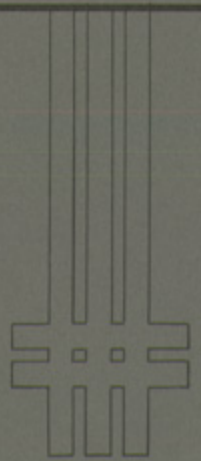


**F. B. Sylvester.**

General Manager



# The Granby Mines Phoenix, B.C.





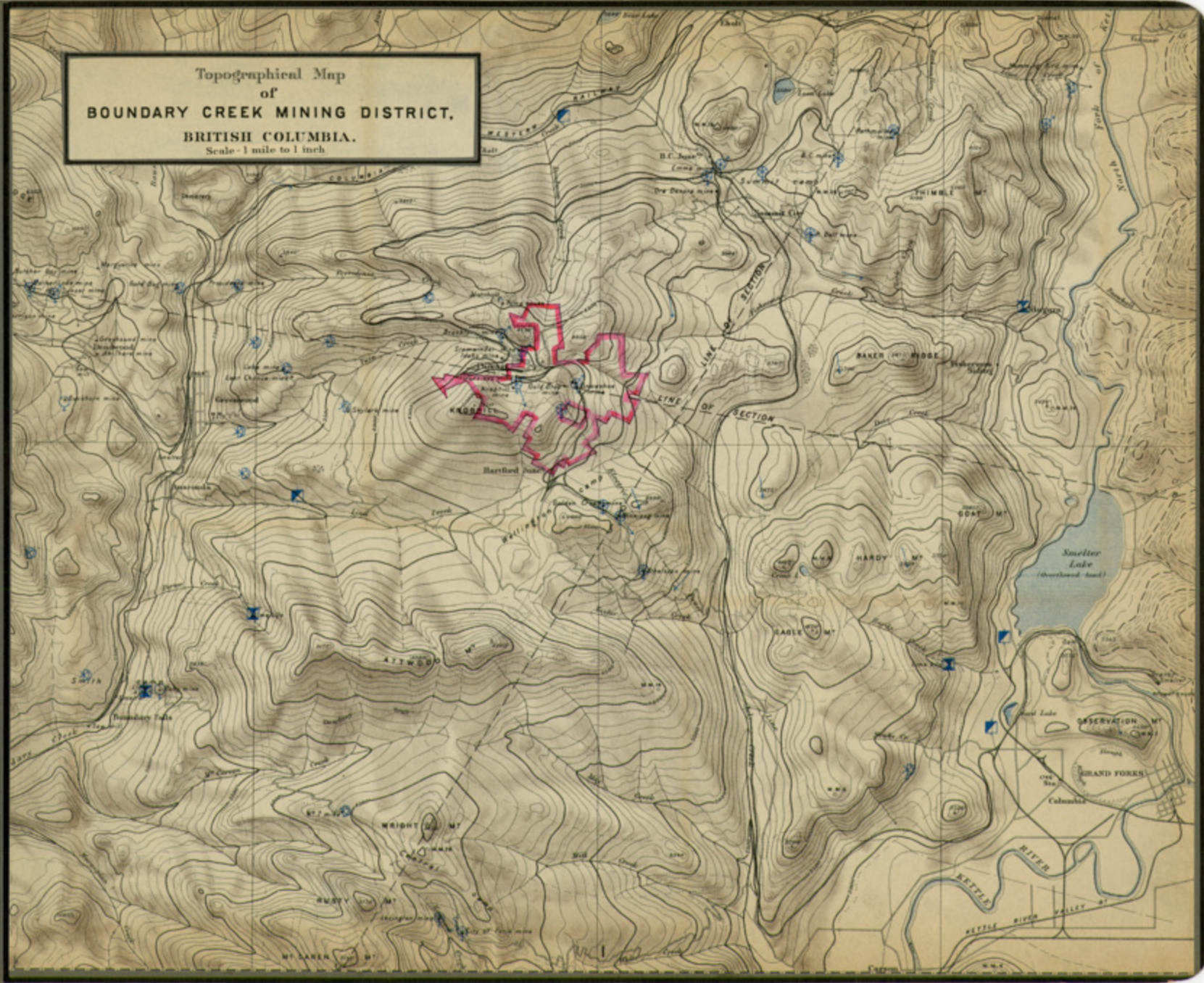
The GRANBY  
CONSOLIDATED  
MINING-SMELT  
ING & POWER  
COMPANY *Ltd.*

*Phoenix, B.C.  
Jan. 1915.*

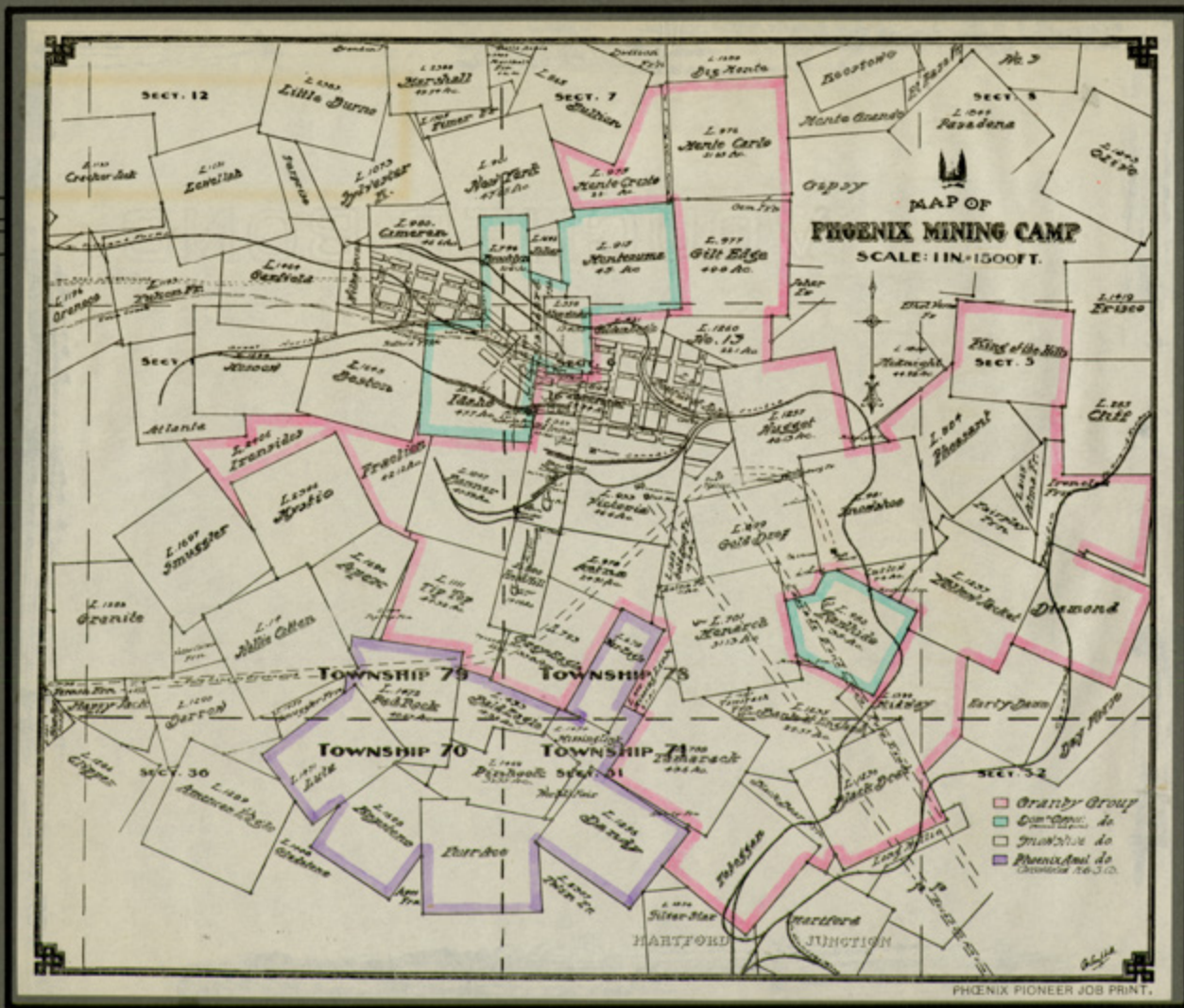




Topographical Map  
of  
**BOUNDARY CREEK MINING DISTRICT,**  
BRITISH COLUMBIA.  
Scale - 1 mile to 1 inch







1914



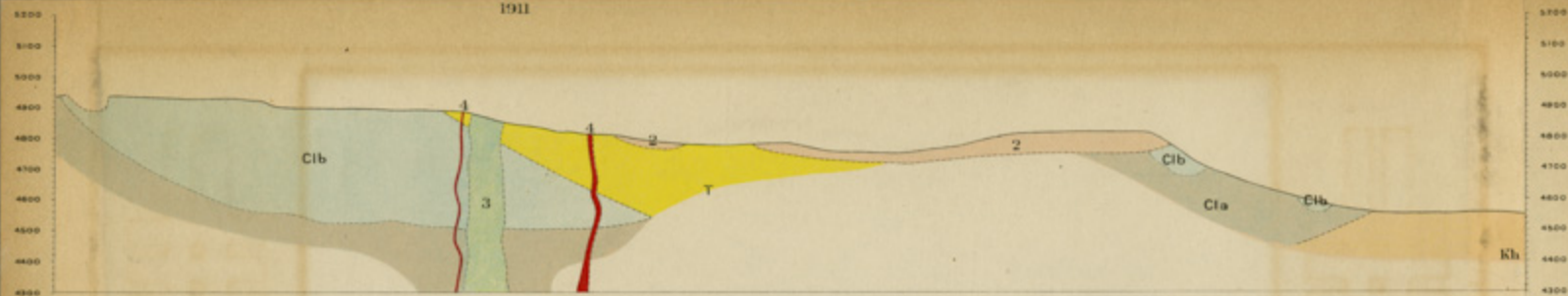




**PHOENIX**  
BRITISH COLUMBIA  
400 FEET TO 1 INCH

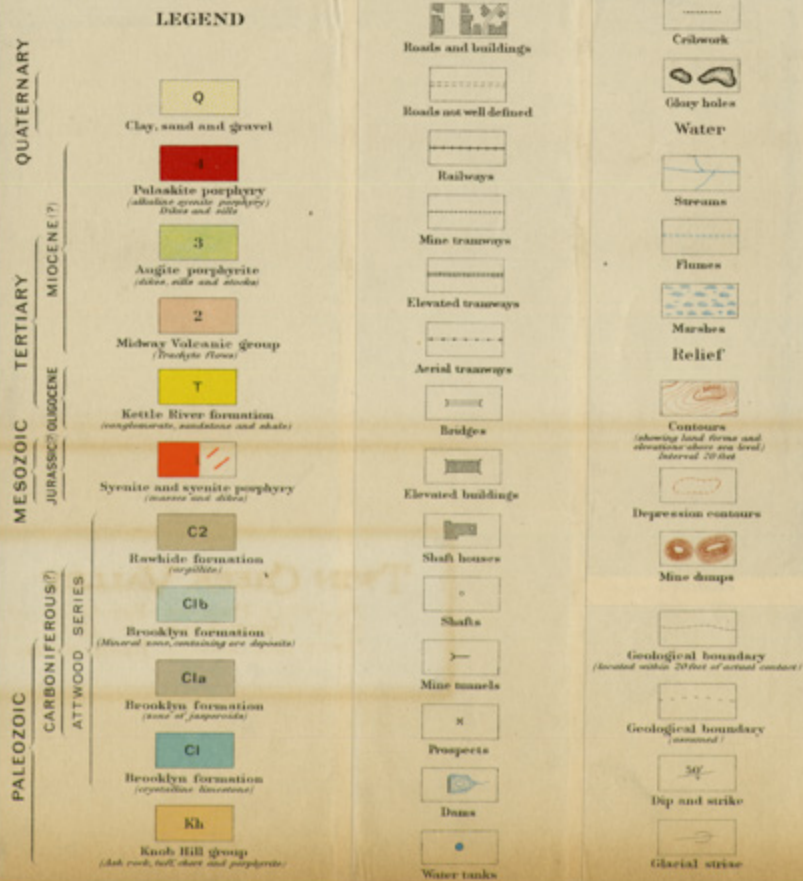






Structural section along line AB

Scale, horizontal and vertical, 400 feet to 1 inch







### TWIN CREEK VALLEY

Showing PHOENIX - Elev. 4500' - at upper end,  
and GREENWOOD - " 2500' - at lower end.  
Power Line between Phoenix and Anaconda at right.







Ravine Din.  
Gold Drop Din.

Gold Drop Mine

Victoria No. 1.

PHOENIX CAMP from "KING OF THE HILLS" Claim.







• Original Granby Cabin •

Moonlight  
done







Phoenix in 1899







Fifteen Years Later  
1 9 1 4





In - -  
Winter



View  
from  
Summit



Business section





# Surface Plant



*General Office.*



*Engineering  
Department*





*Snowshoe Cottage --  
Superintendent's Residence*





*The Boarding House*



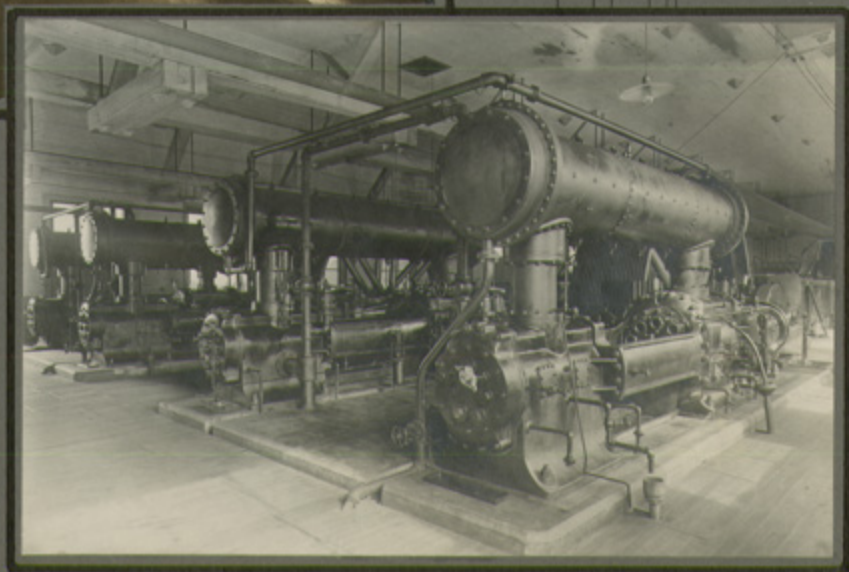
*After the fire of Aug. 12, 1910-*





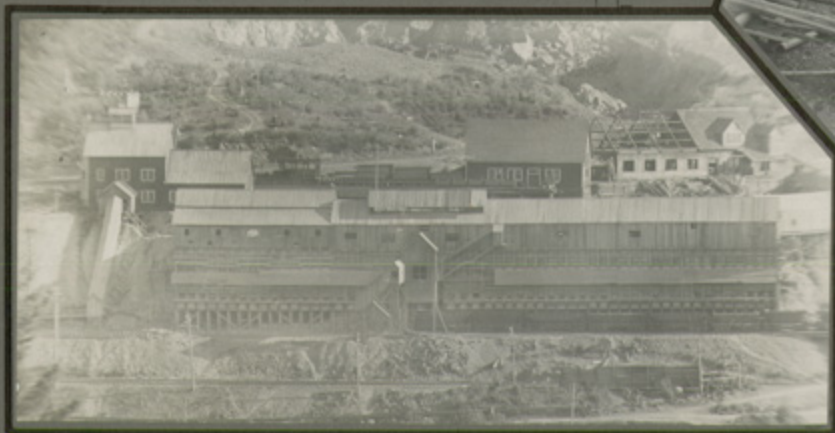


*Air Compressors -*

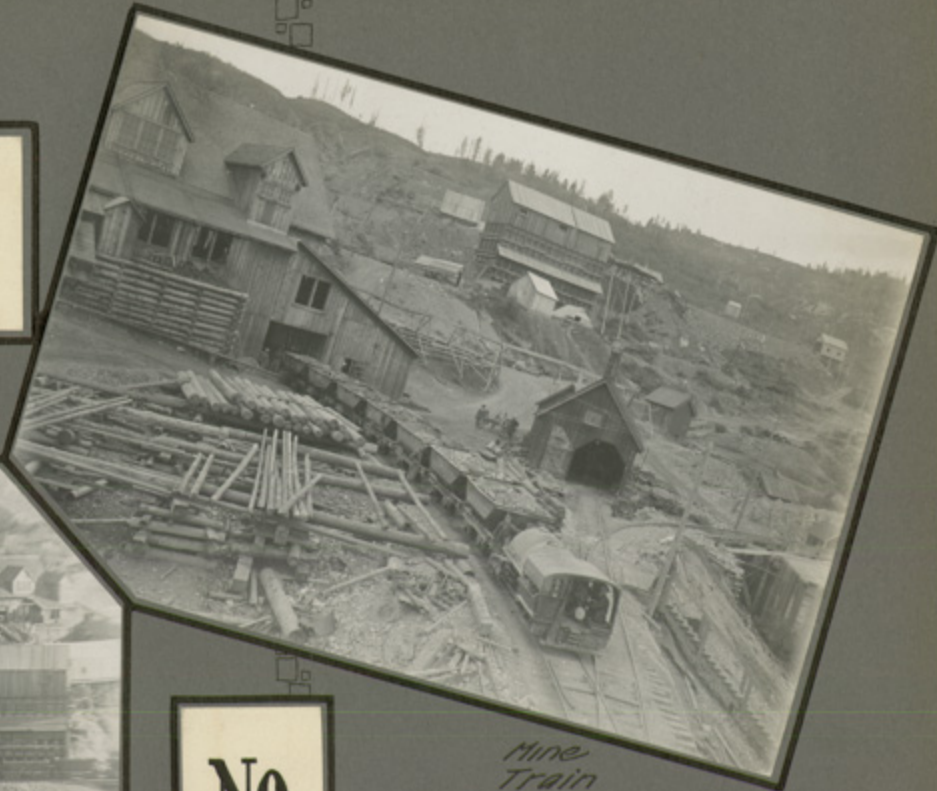




# Shipping Outlets



*Bins and Crusher.*



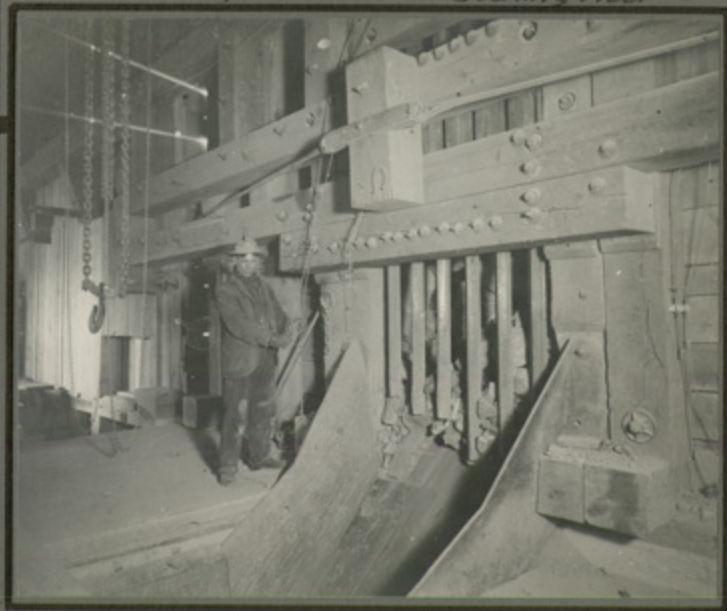
*Mine  
Train*

**No.  
1.**





*Original Plant Built 1904  
Burned 1910.*



*Cushing Floor - -*



*Present Plant.*

**No.  
2**





Shaft House and Bins —



Victoria







Under - -  
Construction -







Crushing  
Floor -



Belt --  
Conveyor





*Loading Ore*







*View Overlooking Snowshoe Claim*

**Gold Drop**





*Snowshoe Tunnel Level—*



*Mine Train No. 3 Tunnel—*



*Monarch Pit*

*Monarch Tunnel No. 2.*







*Terminals  
on - - - -  
Curler Claim -*







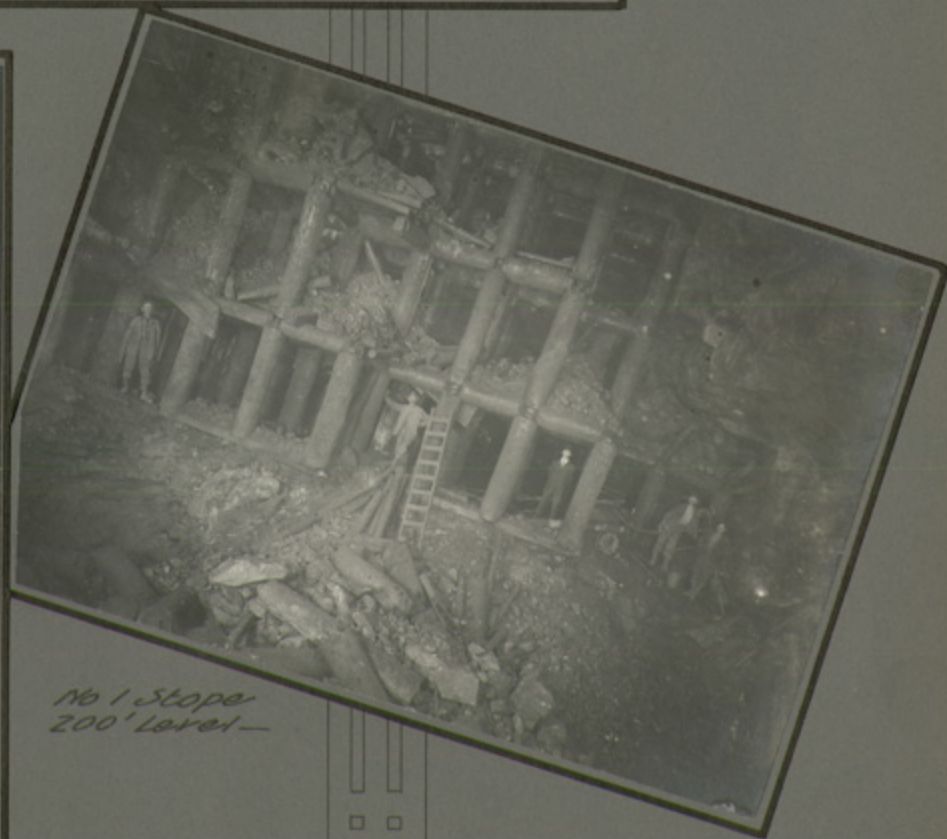
Crushing  
Floor --





# Underground

*Semi Open Stopes —*



*No 1 Stope  
200' Level —*

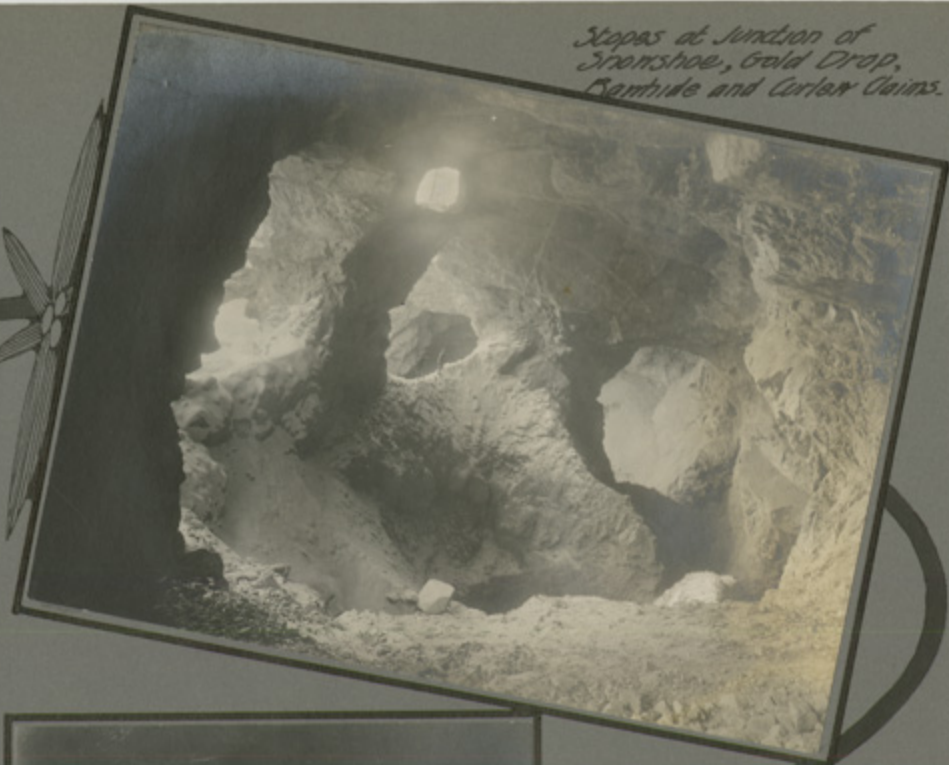


Stops at Junction of  
Ironshoe, Gold Drop,  
Senthule and Carlew Claims.



No. 1 - North Side

Gold Drop Main Stope



No. 2 South Side







**GOLD DROP MAIN STOPE**  
Made by Removing Pillars at Right in No. 1. There are the same at Centre and Left in No. 2.  
Average Length, 400'; Width, 150'; Height, 80'; Ore Extracted, 400,000 tons.





No. 2 Tunnel Stopes 1900 -







No. 2 Tunnel Stopes 1905.







*No. 2 Tunnel Slopes 1900*





Loading Ore from Chutes 400' Level—



AC  
Ore Pocket  
400' Level -



200' Level  
Car ---

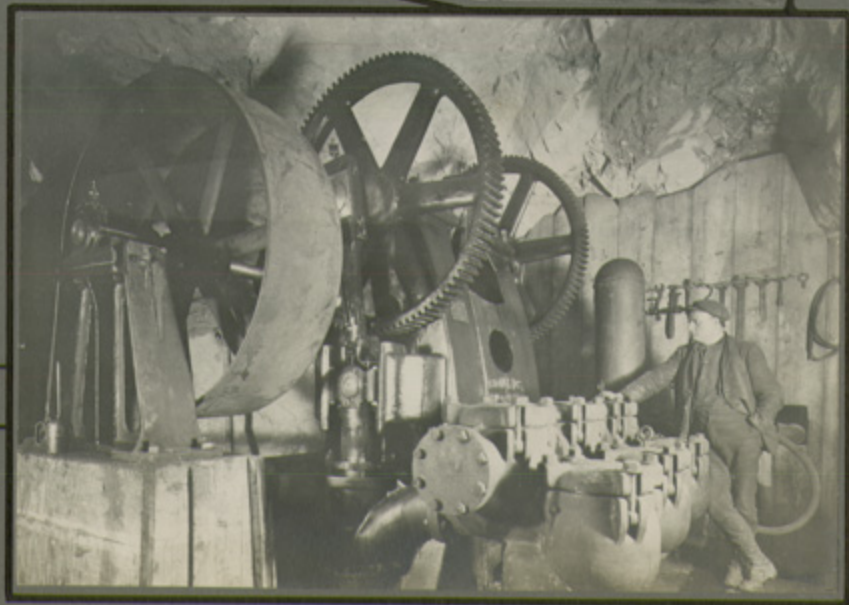




*Stope Filling -*



*Victoria Shaft Station  
400 Ft. Level - - - -*



*Pump Station  
400' Level - -*



70 Steps 400' level -



Diamond  
Drill --



bits in No. 5 Tunnel -





# The Glory Hole

Open cuts  
Made in  
1894-5.



Glory Hole and Partial Rail Tunnel 1901-







*A View in 1902.*







*Views taken  
in 1905-6-*







*Upper End of Cary Hole.*





1908



1910





*After a Cave ---*







*View in Glory Hole in 1912.*







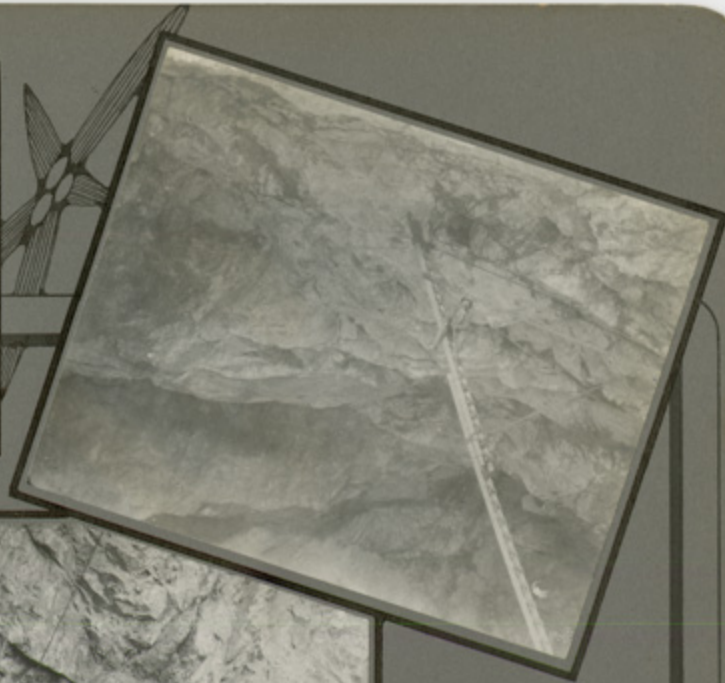
*Electric Shovel in Pit 1914.*



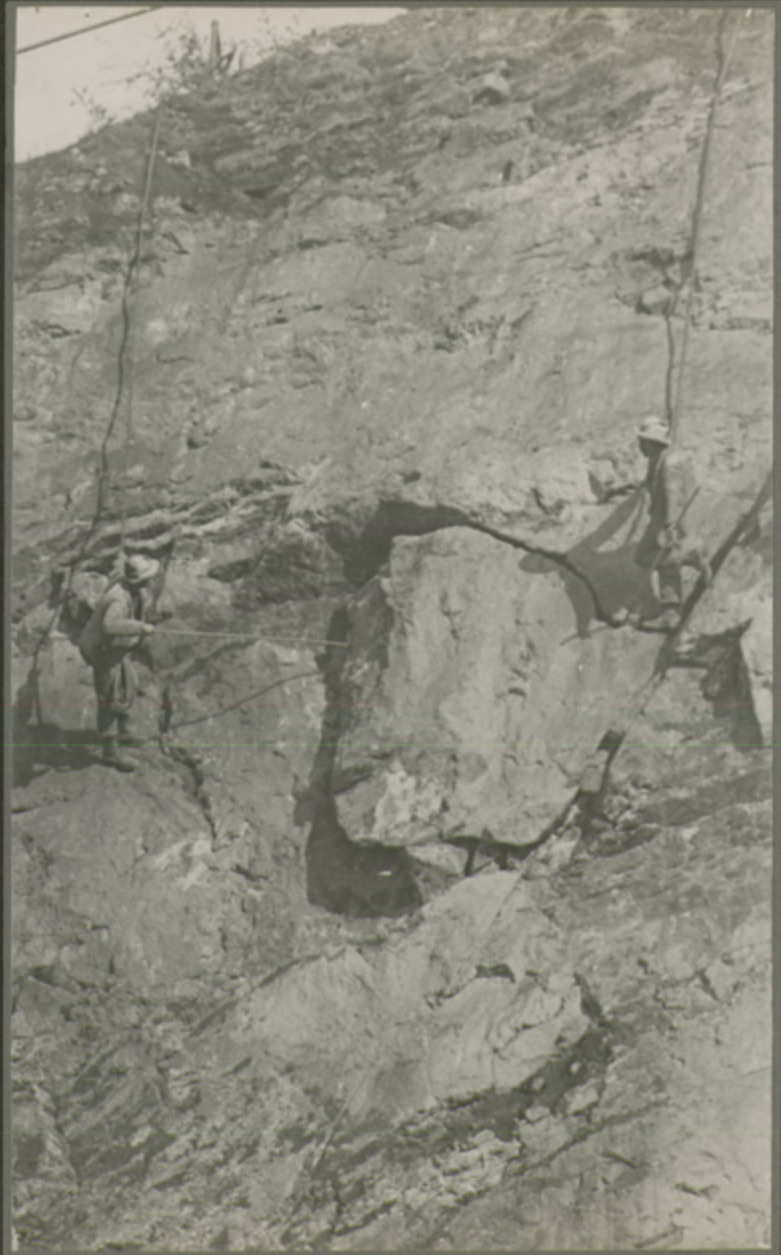




B  
A  
R  
R  
E  
N



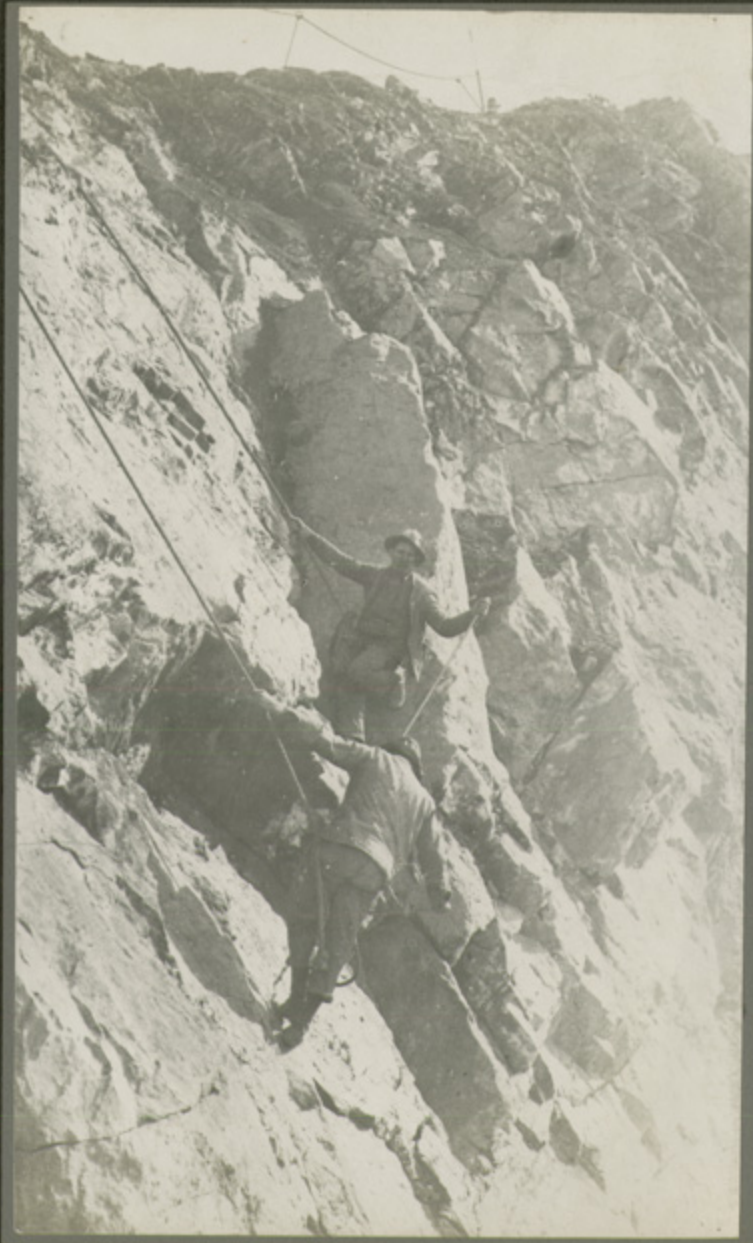














*Cold Drop Cabin -*



**Winter Views**



*Snowshoe Cabin -*











Above the Clouds









*View from Tamarack Claim*



**The Hills around Phoenix**



*View from Midway Claim -*







*Road to Grand Forks*



*Grand Forks Valley -*







Cavo . . .  
April 21st 1919.







*B.N.R. Tracks*

